

HISTORY SUMMARY SAND POINT PENINSULA

PRE-EURO AMERICAN SETTLEMENT

- Native American group associated with "hloo-weelth-AHBSH" peoples inhabited three longhouses along Wolf Bay, immediately south of Sand Point

MID-1800s EXPLORATION

- 1850, first likely Euro-American sighting of peninsula, name Sand Point used
- 1855, U.S. Government Land Office surveyed Sand Point

EURO-AMERICAN SETTLEMENT

- 1868, William Goldmyer homesteaded 81 acres immediately south of Pontiac Bay
- 1886-90, shipyard, Pontiac Brick and Tile Company, Pontiac Post Office established northwest part of peninsula
- 1914, Pontiac Brick and Tile Company closed
- 1910s to early 1920's, four families resided northwest portion of Sand Point
- 1918 to 1926, Carkeek Park located on the northwestern part of peninsula

EARLY AIRFIELD DEVELOPMENT

- Late 1910s to 1920s King County acquired small farms on Sand Point peninsula
- June 19, 1920, groundbreaking ceremony with symbolic tree cutting and first aircraft landing, station size 400 acres
- Apr.-Sep. 1924, four Army Air Corps planes began and ended "round-the-world flight" from Sand Point
- 1926, Carkeek Park sold to King County then deeded the peninsula to the Navy
- September 13, 1927, Lindbergh and Spirit of St. Louis visit, attendance 50,000
- 1928-29, constructed Buildings 2, 5A, 5B, 5C, 5D, 9, 20
- Early to mid-1930s, WPA transported hundreds of loads of soil for landing facilities
- 1936-39, constructed Bldgs 6, 15, 18,, 25, 26, 27, 29, 30, 31, 41, 330, 331, 332, expanded Building 9
- 1937, Pontiac Bay (3 acres) filled in to construct Building 27 and adjacent tarmac

SECOND WORLD WAR

- 1939, airfield grading involved moving more than 1,500,000 cubic yards soil
- 1940-41, runways paved with asphalt, main runway 400 feet wide, 3,700 feet long
- 1941-42, barracks, rec center, motor shop, gatehouse constructed, size 540 acres
- 1941, aircraft prohibited to carry live bombs due to new adjacent neighborhoods
- 1942, Sand Point Housing Project constructed (Radford Court Student Apartments)
- 1943-44, Buildings 193 (hangar), 40, 141/192, 222-224 (barracks) constructed

POST-WAR

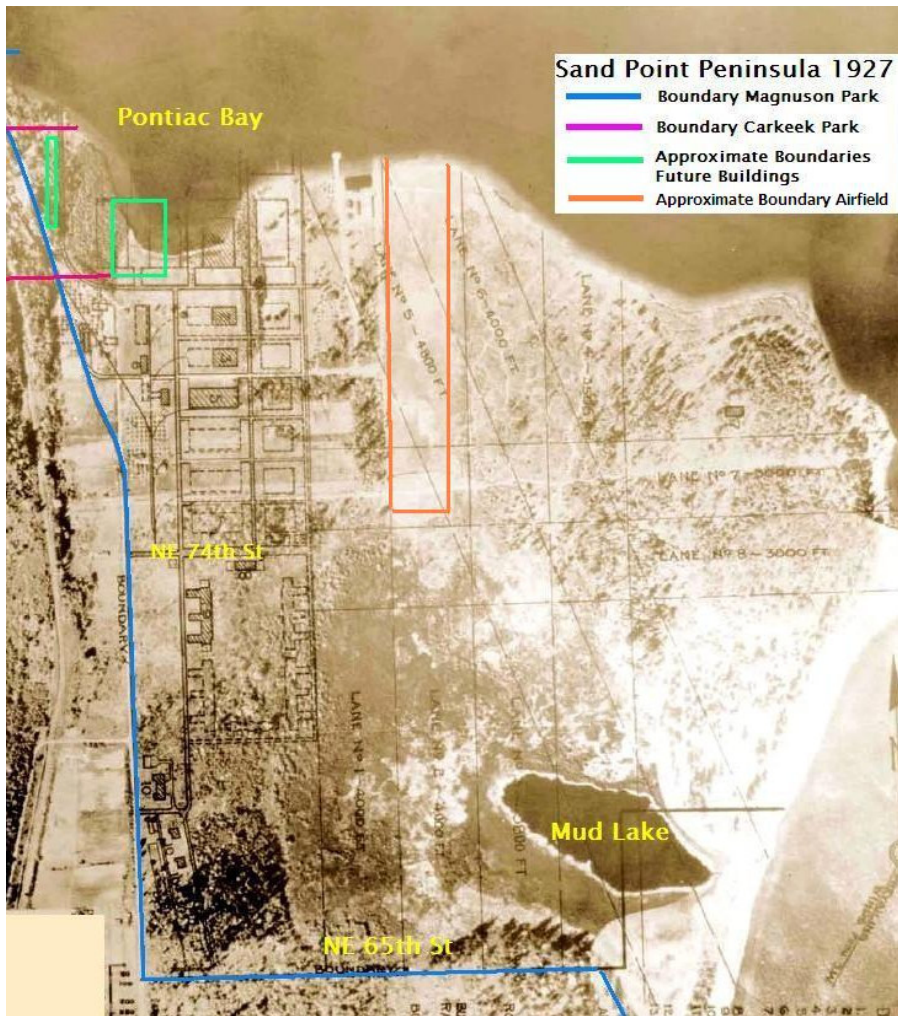
- 1947, rumored that NAS Seattle to be closed due to creation of Air Force
- 1950, station scheduled for deactivation, delayed due to Korean War
- 1950, U.S. Fish and Wildlife Service established research laboratory NE 65th St.
- 1952, base closed except for Naval Reserve activities late 1950s, rumors of jet aircraft use, requiring extended runways, jet fuel storage
- 1965 - "Outdoor Recreation and Open Space Plan", Seattle Park Department and Seattle Planning Commission, identified Naval Air Station for major park development
- 1969, main airstrip resurfaced and extended to 4,800 feet, estimated cost \$500,000

MILITARY TO CIVILIAN CONVERSION

- June 30, 1970, air station deactivated, all flight operations ended, surplus 347 acres
- 1975, 196 acres of the station transferred to the City of Seattle for Sand Point Park
- 1975, Sand Point Park Master Plan, proposed 75-acre Sports Meadow, tennis courts; neighborhood park, maintenance complex, and restaurant.
- December 1975, Sand Point Park dedication including ceremonial tree planting
- Late 1970s, demolition of runways, tarmac and taxiways, totaling 120 acres
- May 1977, park renamed in honor of Senator Warren Grant Magnuson
- Mid to late 1980s, Kite Hill construction, 40,000 tons of demolished runway and soil
- Late 1980s - "Sand Point Site Development Master Plan, Naval Station Puget Sound", proposed using Naval Station Puget Sound for support facilities.
- 1989 - "Master Plan Update Magnuson Park" by Seattle Parks and Recreation".
- 1991 - U.S. Base Realignment and Closure Commission recommends closure Naval Station Puget Sound, requested City of Seattle to lead reuse plan development.

CONCEPTUAL PLANNING, DESIGN, CONSTRUCTION

- 1993 – Res. 28832, adopted Community Preferred Reuse Plan for Sand Point.
- September 1995, Naval Station Puget Sound officially closed including transfer of 90 acres to City of Seattle and University of Washington
- 1997 – Res. 29429, approved Sand Point Physical Development Management Plan
- 1999 - Publication of "Sand Point Blue Ribbon Committee".
- 1999 – Res. 30063, additional guidance on design for Magnuson Park.
- 2001 – Res. 30293, additional guidance on design for Magnuson Park
- 2004-2006 - Full City Council approval of the wetland and sports fields master plan.



Proposed Naval Station Layout 1927



Proposed Field Layout Wetland and Sports Field Project, 2003